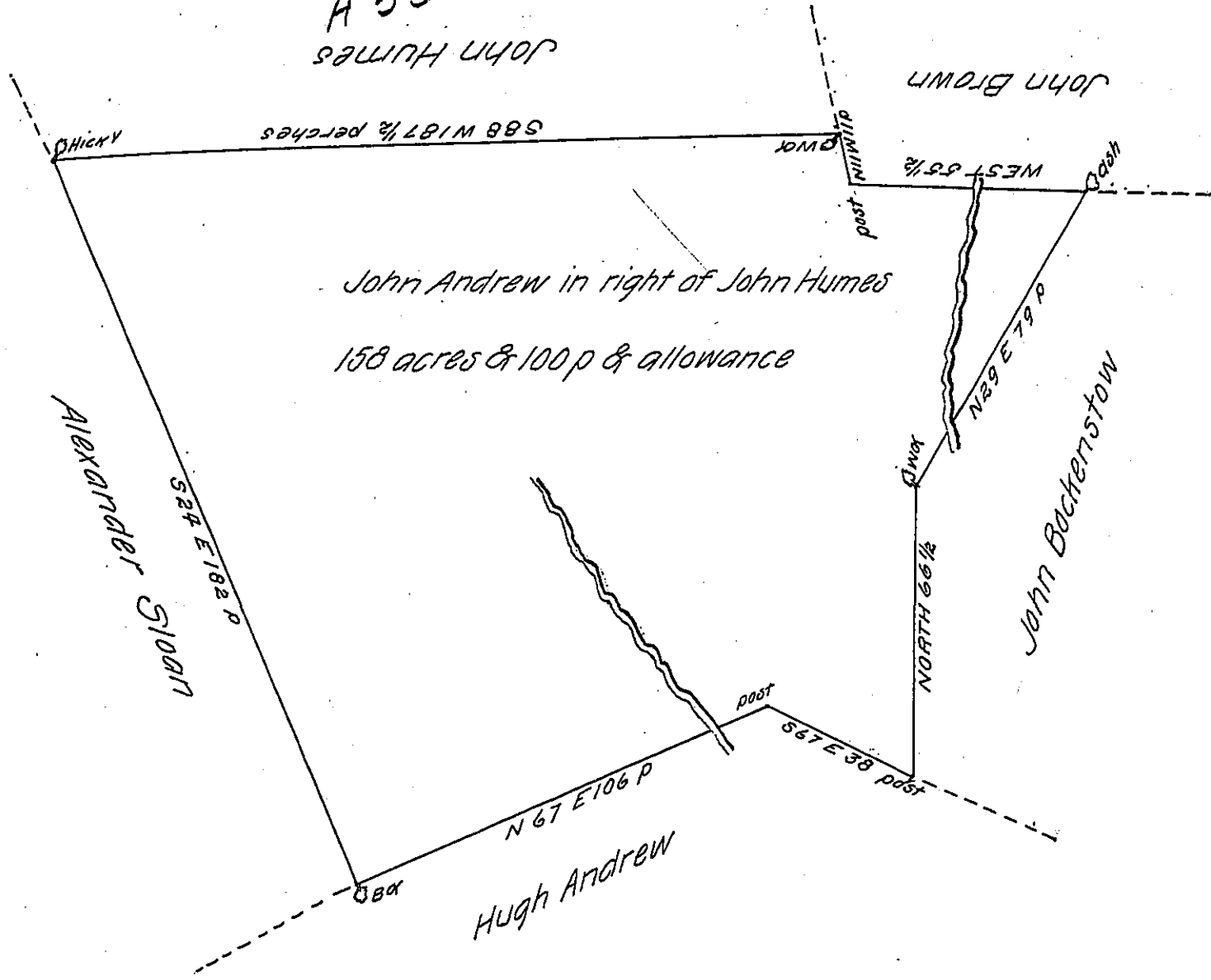


A 53-194

John Humes



John Andrew in right of John Humes
158 acres & 100 p & allowance

Alexander G10011
S 24 E 18 1/2 P

Hugh Andrew
N 67 E 10 1/2 P

John Beckenstow
N 29 E 7 1/2 P
NORTH 66 1/2

By virtue of a warrant dated the second day of November 1747
Surveyed the 9th day of April 1788 To John Andrew in right of John Humes the
above described tract of land it being part of a larger tract situate in East Hanover
Township Dauphin (Late Lancaster) County Containing 158 acres & 100 perches &
allowance of six P Cent for roads &c

To John Lukens Esquire
Surveyor General of Pennsylvania }

Thomas Clark D.S.

IN TESTIMONY that the above is a copy of the original remaining on file in
the Department of Internal Affairs of Pennsylvania, made
conformably to an Act of Assembly approved the 16th day of
February, 1833, I have hereunto set my Hand and caused
the Seal of said Department to be affixed at Harrisburg,
this second day of March 1905

Joseph P. ...
Secretary of Internal Affairs.